



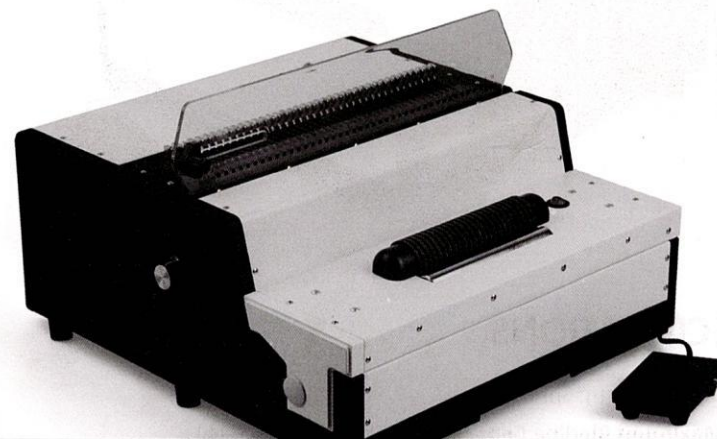
## 12 MONTHS GUARANTEE

WE OFFERS PRODUCTS OF THE HIGHEST QUANTITY SHOULD ANY DEFECT APPEAR WITHIN 12 MONTHS OF DATE OF PURCHASE, PLEASE RETURN THE PRODUCT WITH PROOF OF PURCHASE TO US, AND WE WILL REPAIR OR REPLACE IT FREE OF CHARGE.. THIS GUARANTEE DOES NOT AFFECT YOUR STATUTORY RIGHTS.

### **ATTENTION**

- 1.Read this operation manual carefully before using.
- 2.Keep the machine separately from children.
- 3.Keep the machine away from fire and liquid.
- 4.Put the machine on a stable and safe place in order to prevent it from falling or causing any injury to people or the machine itself.
- 5.Test the machine with some scrap paper before formally punching and binding, to make sure whether the position is correct to punch.

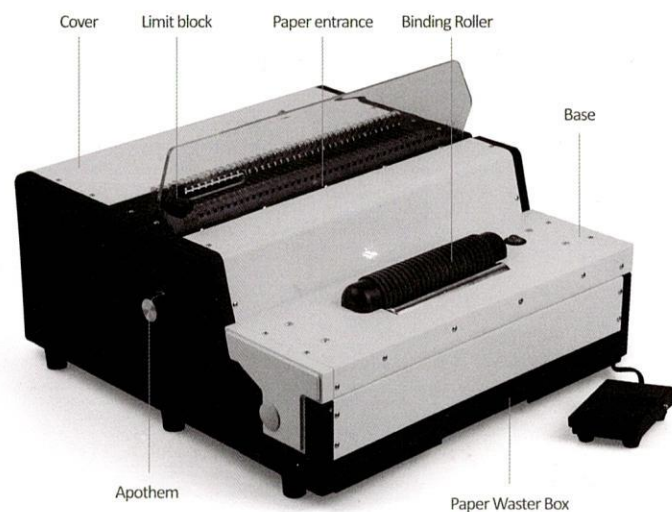
# COIL(SPIRAL) BINDING MACHINE ELECTRICAL



## OPERATION GUIDE



## SPARE PARTS LIST



## SPECIFICATIONS

**Binding Form:** Sprial ring

**Maximum Binding Capacity:** 500sheets(80g paper)

Maximum 25sheets (80g paper) per manual punch

**Max Binding Width:** F4 size

**Adjustable margin:** 2.5,4.5, 6.5mm

**Quanlity of Movable Cutter:** All

**Number of Holes:** 54holes/56holes,Arbitrary

**Hole Distance:** 6.29 /6.00

**Size of Machine:** 430x450x200

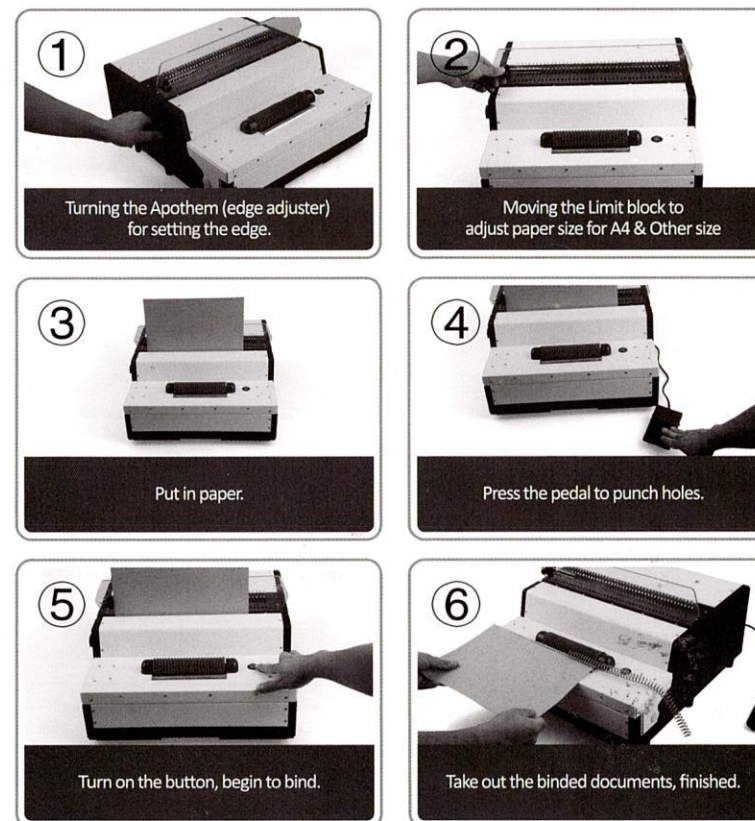
**Punching Form:** Electric (220V/50HZ/110V/60HZ)

**Net Weight:** 28.3kg

## OPERATION GUIDE

PLACE THE MACHINE ON A STABLE AND SAFE PLACE BEFORE USING.

### Punching and binding operation



### Clean up the waste paper box

1. Pull out the waste paper box from the bottom of the machine, clean it and insert it back again.
2. Please clean up the waste paper box frequently.